

# CONTROL CABLE REPLACEMENT INSTRUCTIONS

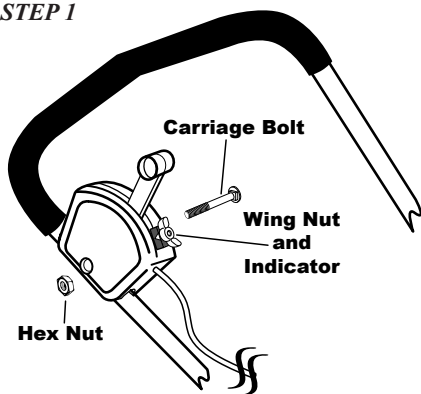
**EarthWay®**  
EV-N-SPRED

Please call us if you have any difficulty with assembly or operation of this spreader. We can be reached via the telephone at 800-294-0671 or 574-848-7491 Monday—Friday 9:00am ~ 4:00pm or visit us online at [www.earthway.com](http://www.earthway.com)

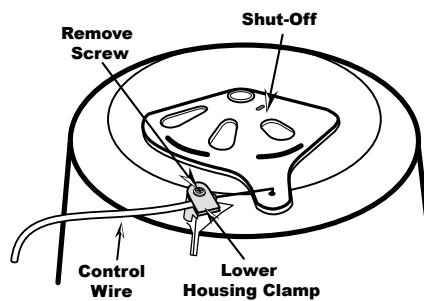
## HELPFUL HINTS: READ THE DIRECTIONS BEFORE ASSEMBLY

Have the necessary tools available to complete this assembly: Ratchet & 7/16" socket, small and medium size Phillips screw drivers

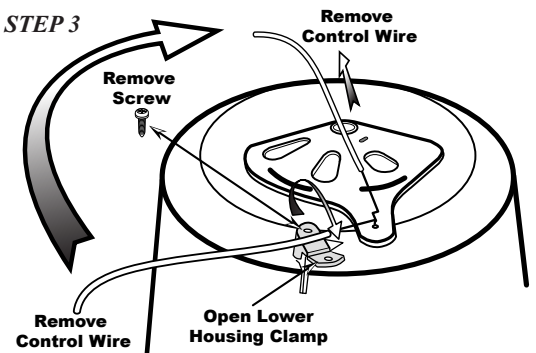
STEP 1



STEP 2



STEP 3

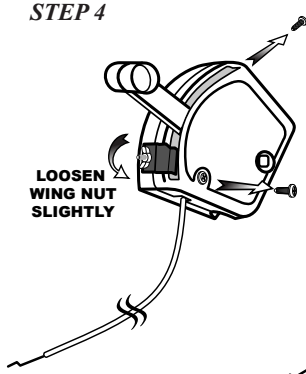


**STEP 1.** Remove the **Control Assembly** from the handle.

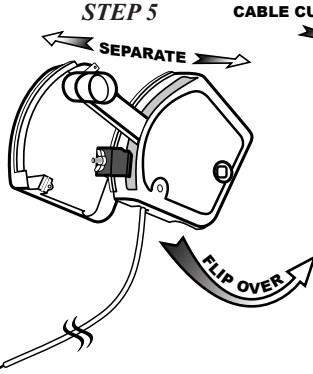
**STEP 2.** Turn the spreader over on to the **Hopper**.

**STEP 3.** Remove the screw from the **Lower Housing Clamp** - your clamp may look different from what is shown. Lift and remove **Control Wire** from **Clamp** and then from the **Shut-off**.

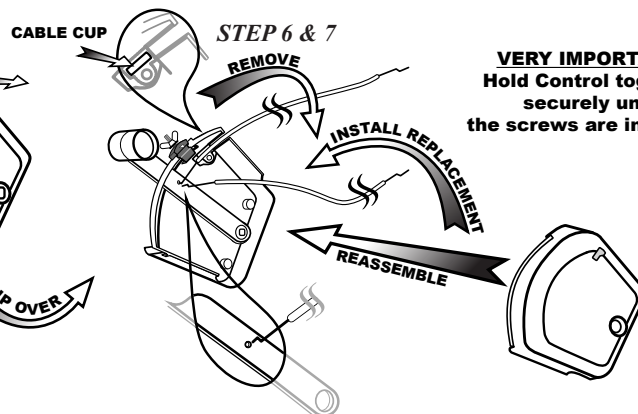
STEP 4



STEP 5

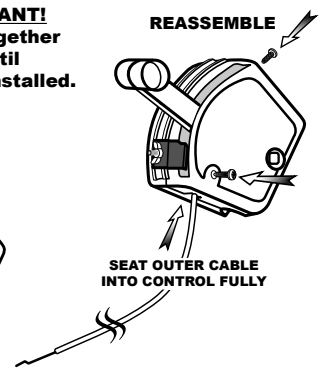


STEP 6 & 7



**VERY IMPORTANT!**  
Hold Control together  
securely until  
the screws are installed.

STEP 8



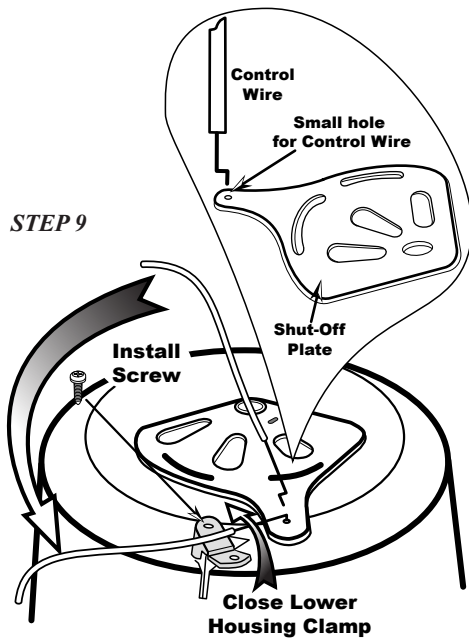
**STEP 4.** Loosen the **Wing Nut** on the **Indicator** stop slightly. Next, remove the two screws that hold the **Control Assembly** together as shown above.

**STEP 5.** Separate the two halves of the **Control Assembly** - taking care to keep the **Indicator** on the side with the **Lever** as shown above.

**STEP 6.** Remove the **Control Wire** from the **Lever** - it is shaped like a "Z" and is installed in and behind the **Lever**, see call out above.

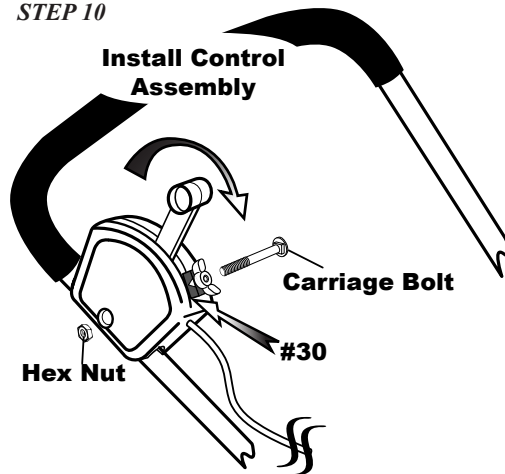
**STEP 7.** Replace with the **Control Wire** by inserting the inner wire into the **Lever** as shown above, and seat into the **Cable cup**.

**STEP 8.** Reassemble the halves by placing the side with the **Lever** and **Control Wire** down facing up, and then putting the other cover in place. Hold the two halves tightly and reinstall the two screws. **NOTE:** Make sure before you tighten the screws that the outer **Control Wire** is fully seated in the **Control Assembly**.

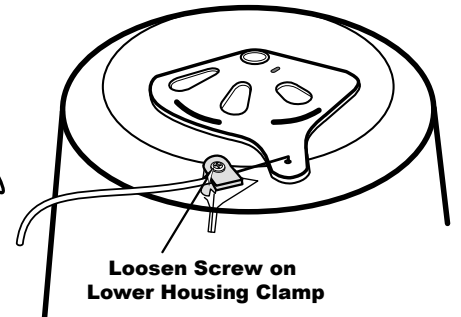


STEP 9

STEP 10



STEP 11



**STEP 9.** Install the **Control Wire** into the **Shut-off** as shown above. Next place the **Control Wire** into the **Lower Housing Clamp** and close the **Clamp cover** and secure with the screw that you removed earlier. **DO NOT TIGHTEN YET.**

**STEP 10.** Next install the **Control Assembly** on to the **Upper Handle** and secure with the carriage bolt and hex nut and tighten. Now push **Lever** to #30.

**STEP 11.** Loosen the screw on the **Lower Housing Clamp** slightly.

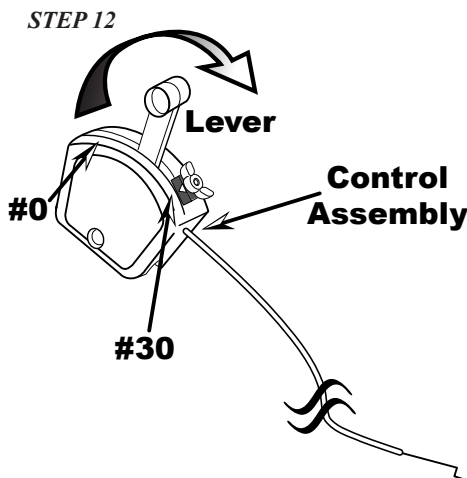
### **CALIBRATION:**

**STEP 12.** Set the **Lever** on the **Control Assembly** to #30 full open position.

**STEP 13.** Next, slide the **Control Wire** in or out until the **Shut-off** is in fully open position.

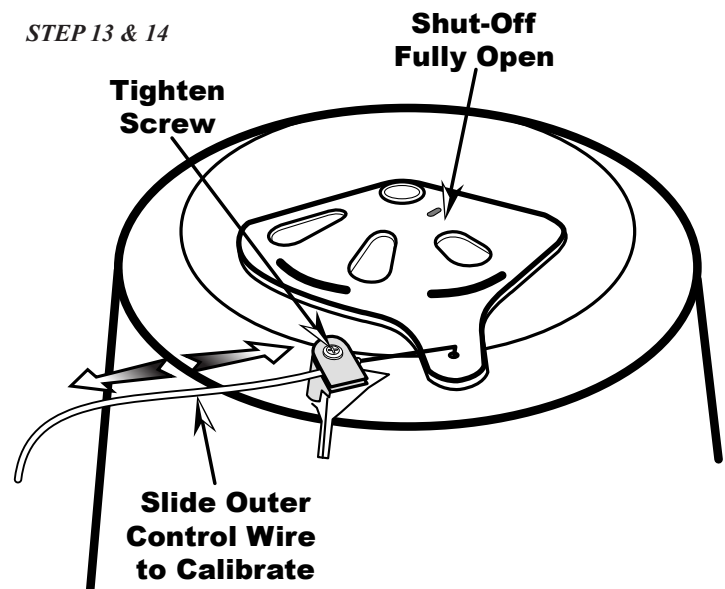
**STEP 14.** Tighten the screw on the **Lower Housing Clamp** fully and cycle the **Lever** from **Open to Close to Open** and recheck that when at **Lever** is at #30 on the **Control Assembly** the **Shut-off** is fully open.

**THE REPLACEMENT IS COMPLETE.**



STEP 12

STEP 13 & 14



Shut-Off Fully Open

Tighten Screw

Slide Outer Control Wire to Calibrate